



GMT MONTHLY MEMBERSHIP PROGRESS REPORT

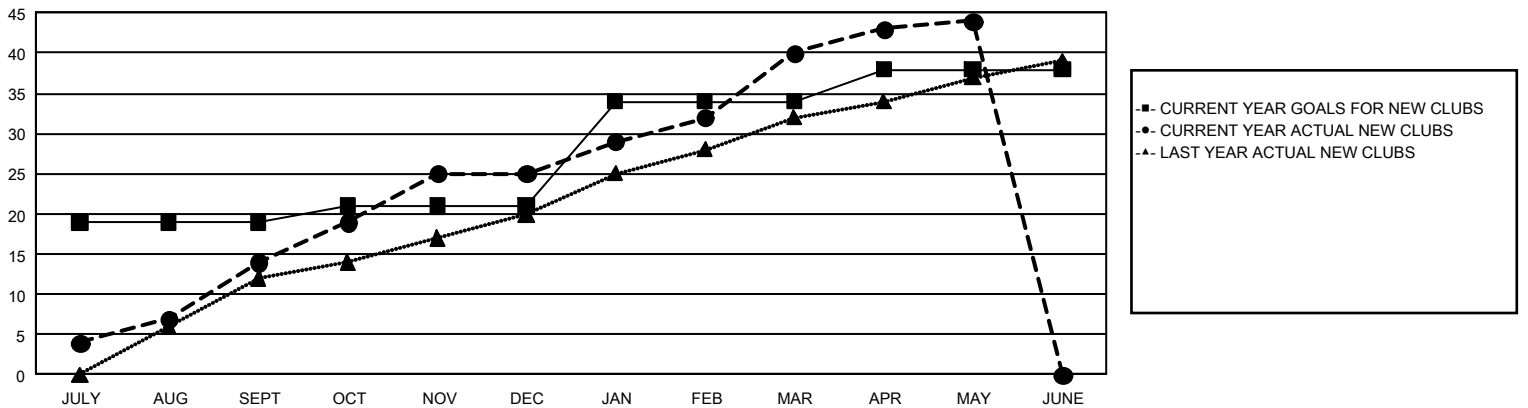
GAT Constitutional Area 5 - Korea

Results as of: 5/31/2025

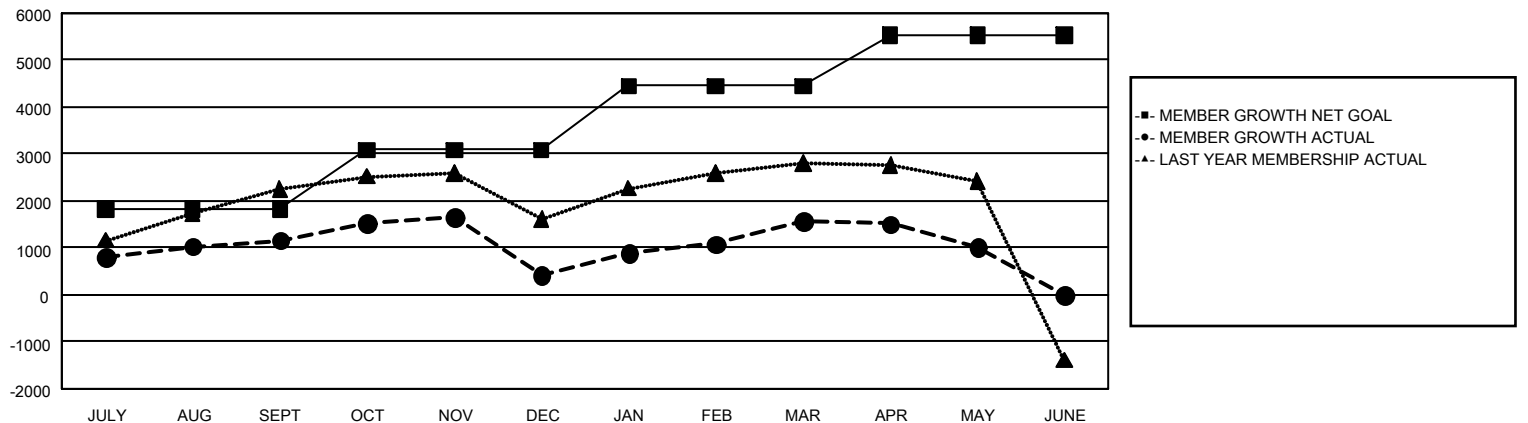
REPORT DOES NOT INCLUDE CLUBS IN UNDISTRICTED AREAS.

Clubs				Members			
RESULTS FOR 2024-2025				RESULTS FOR 2024-2025			
QUARTER	NEW CLUB GOAL	NEW CLUBS	DROPPED CLUBS	QUARTER	MEMBER GROWTH NET GOAL	MEMBER GROWTH ACTUAL	DROPPED MEMBERS ACTUAL (including transfers)
JULY/AUG/SEPT	19	14	8	JULY/AUG/SEPT	1,828	4,470	2,838
OCT/NOV/DEC	2	11	21	OCT/NOV/DEC	1,256	2,270	2,800
JAN/FEB/MAR	13	15	9	JAN/FEB/MAR	1,363	2,730	1,360
APR/MAY/JUNE	4	4	1	APR/MAY/JUNE	1,085	942	1,355

GOALS AND ACTUAL NEW CLUBS CUMULATIVE



GOALS AND ACTUAL MEMBERS CUMULATIVE



DROPPED CLUBS: 39

DROPPED MEMBERS

DECEASED	232
CLUB CANCELLED	319
OTHER	7,684
TOTAL	8,235

1,570 CLUBS OF 2,056 ADDED 1 OR MORE NEW MEMBERS

[CLICK HERE FOR CUMULATIVE MEMBERSHIP DATA](#)

GENDER DISTRIBUTION

MALE	51,695 (72.73%)
FEMALE	19,375 (27.26%)

TOTAL FAMILY UNIT MEMBERS	3,494
FAMILY MEMBERS PAYING HALF DUES	2,018